

DAS

GREEN COLLABORATION

Learning Space +
Common Ground +
Submerged Architecture +
Recycled Materials Design

SoA+D

YOU + **VOLUME**

ARCHITECTURE
INTERIOR DESIGN
LANDSCAPE AND PLANNING
PROJECT FEASIBILITY STUDY
DESIGN CONSULTANT



MORE IN: <http://www.facebook.com/volumematrix> CONTACT: 221 CHALOEMKET 2 RD. POMPRAB, DEBSIRIN, BANGKOK 10100 TEL. 02-621-8750

VOLUME MATRIX CO., LTD



www.facebook.com/integrateddesignoffice

architecture + interior design



Architectural and Interior Turnkey Services

27/128 m.6 Bangwalee Pasircharoen

Bangkok, Thailand 10160

028652760(Office), 0817144152(Dechbut)

0819054191(Isaravuth), 0863197567(Wichan)



spectrum.ds
SPECTRUM DESIGN STUDIO CO., LTD.

<https://www.facebook.com/SpectrumDesignStudio>

DAS

December 2012

Contents

Trip	02
Bangmod Goes Green	06
Submerged Architecture	10
Recycled Material Design	11
Reused Playground	12
Common Ground	13
Prize	14
Talk	16
Social	17
Memories	20
Curriculum	22

Production Supervisor

Leenawat Teerapongramkul
Kornchanok Chidchaisuwan

Advisor

Weeraphan Shinnawatra Dr.

Art Editor

Apinya Limpai boon
Beer Singnoi
Worrasit Tantinipankul , Dr.
Woranuch Chuenruedee kamol

English Editor

Edna Aclan Abrao

Coordinator

Thitikarn Srithranon

Advertising Director

Panida Panich

Dean's Message

During the past several years, we have experienced more severe disasters which have occurred all over the world, claiming thousands of human lives and assets. Global climate change and its effects became one of the major issues in the World Economic Forum. As the economy grows exponentially, the depletion of our natural resources skyrockets. What will be left for our next generation? How can we reduce and reverse this disastrous trend? As humans, we have to learn this lesson; we have to be responsible to what we have done in the past. As an academic institution, how can SoA+D transform "sustainable design" into reality?

In Architecture and Interior Architecture programs, we will explore how to reduce energy consumption in our school building and offer sustainable development plans for the surrounding area of Bang Khun Thian with the concept of "Green Building". For our Industrial Design program, we will lead with 3R-design concept (Reduce, Recycle & Reuse) while Communication Design program can help convey our messages to the wider public through IT and communication media. These actions will strengthen our school design concepts in the future. I dare to challenge all of you. Are you bold enough to join with me?

Last but not least, as an architect, I leave my words and a question to all of you as stated below:

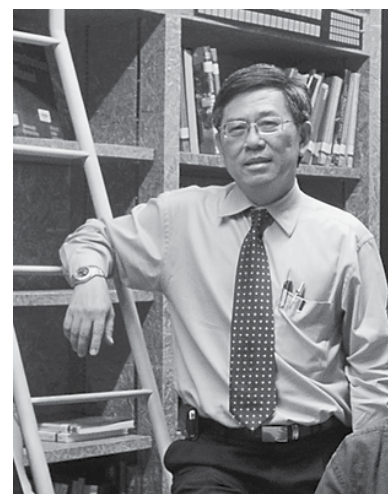
In the far past: Human.....**ARCHITECTURE & DESIGN**.....**NATURE**

In the past century: **ARCHITECTURE & DESIGN**...**COMMUNITY**.....**NATURE**

In the past decade: **COMMUNITY**....**CITY**.....**Nature**

At present: **ARCHITECTURE & DESIGN**..**METROPOLIS**.....**Nature**

How can we find balance between nature and man-made design?



Weeraphan Shinnawatra, Ph.D.
Dean of SoA+D

DAS Trip

01 DENMARK Danish Lecture & Workshop 2 February 2012



Danish design has long been in a forefront in design. Mads Odgaard is an established industrial designer in Europe. He has got vast experience in industrial design in Europe and Thailand due to his design consultancy with Thai manufacturing companies here.

The lecture and workshop were held at SoA+D organized by Industrial Design program. Apart from the knowledge in Danish industrial design, students have also learned how to use advantages of Thai culture and manufacturing industry in order to design products for European markets.

03 BANGKOK Insight Creation Workshop 7 -10 May 2012

SoA+D held Insight Creation Workshop by international and talented designer, Ernest To. This year we had a great opportunity that Mr. Ernest To, with 28 years' experience in design and creative industry worldwide, gave a lecture and a workshop for our industrial design students to find the interesting, innovative, marketable, practical, or good topic useful for their Final Year Project.

The theme of this workshop was "Insight Creation: from Research to Design Insights". It provided an opportunity to provide a stimulating and intensive learning experience. The activities in the workshop encouraged students to think creatively and have an open-minded approach to the subject of industrial design leading to great social contributions to our society.

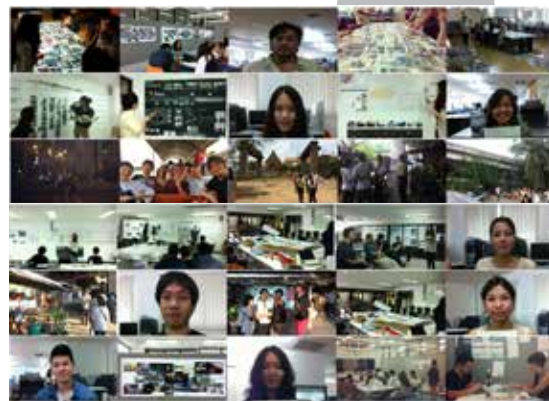
4 days workshop from May 7th - May 10th 2012 included:

- 1) understanding user and interpreting data
 - Students started with user's interview, observation and capturing the 'case study'
 - Once value attributes were introduced, students interpreted data into attributes
 - Students reframed the problems and prepared finding into creative support
- 2) exploring insight bandwidth
 - Students brainstorm wildcard scenarios, for triggering new attributes
 - Students prepared early insights for identifying high level motivation
- 3) checking and improving insights
 - Students checking potential insights, mixed and matched for better proposition
 - Students developed final insights for the 'case study'
- 4) translating insight into design features
 - Students outlined new rational-emotional benefits, reason-to-believe
 - Students suggested the supporting design features of their new 'case study'

"Design research is understanding the experiences and aspirations of people to influence what to create...to understand people's emotional drivers, not only who they are, but who they think they are, and where they are going. Insight answers what is it in for ME?"
– Ernest To



COD L I R B K P F S M D N
N G W B E M U Z C R Q A L W
B J P H R O T S G Z J R B M
M K E N G T O F I T N S M O
E M T O H U G Y T O L I F T
H J I R Q L R K R D P H S F
A O G L C T O P A R K A M D
I M T A B R O S K E A T C R
B C F U Z E V M L S J N I X
R T O H O P E X U S Q E L B
J B R X T O S W I C H A R
05.05.2012 19:00 AT OPPOSITE
PUBLIC OPENING WITH A2102 TOL
K O R H Q V D E N H I
E D N H I L O B S O A + D K C



With the new name: **'TO PARK'**, the editorial processes have reassembled and generated a new set of urban vocabularies. At the pedagogical level, what informs each turning point of the Sub-function/Sub-program studio is crucial. It is interesting to see that the studio progresses into different directions from where it begins. It shifts its agenda from creative speculations to hypothetical design positions and then arrives at possible new interiors responding to the flood situations.

STUDIO INSTRUCTOR: Jiro Endo
WORKSHOP: Jiro Endo and Dr. Nuttinee Kamchanaporn
EDITORIAL DIRECTOR of WORKSHOP/GUEST ARCHITECT
César García Guerra
(Director/Architects www.fundc.com, Universidad Europea de Madrid)
Paz Martín Rodríguez
(Director/Architects www.fundc.com, Universidad Europea de Madrid)
PUBLIC EXHIBITION: TO PARK: planing the unplanned spontaneously
5-10 May 2012 at OPPOSITE Gallery, Sukumbit sois, Bangkok
<http://oppositebangkok.com/>

STUDIO STUDENTS: Nipat Charoenpala (Keng), Chantika Chomchome (Pam), Tachapim Charoenwaravit (Pae), Chalitida Torsutkanok (Ploi), Sutinee Pramoi Na Ayudhya (June), Pattarapon Tonghem (Joe), Akkarachai Buranatrakul (Bu) and Napat Chewchannetchaku (Yam).

GUEST CRITICS: Javier Rojas-Rodriguez, Likit Kittisakdinan, Takashi Nishibori, Pitupong Chaowakul and Dr. Apiradee Kasemsook

02 BANGKOK To Park Workshop 26 April - 4 May 2012

A workshop between the 4th year Interior Architecture Design studio (Sub-program/Sub-function, SoA+D) and 2 tutors from Universidad Europea de Madrid.

We found (or/and you made) a lot of unique inventions in order to cope with the long months of flooding 2011. These had been created through transformations of materials that usually had a different function. Thai identity's ability to propose solutions to serious problems is inextricably intertwined with the values of 'fun' and 'foolishness' in a somehow positive way.

"So where does interior design fit on this solution search scheme?"

The studio was folded into a series of projects that propose different ways of coping and living with the flood by placing activities that utilized the remaining dry areas. The interiors emerged just enough for infrastructural connection, inhabitation, advertisement, entertainment and so on. The studio ended with a collaborative workshop that cut and rearranged the contents of the studio projects. 'TO EDIT' is the task of the workshop. The proposed urban interiors are then being looked at with fresh eyes.

04 SARDINIA ISLAND

Landwork Sardina 2012
21 - 31 May 2012

In May 2012, a group of internationally renowned architects, designers, researchers, local actors, and 65 students from all over the world (Japan, Canada, Germany, France, Spain, Romania, Thailand, Lebanon, Italy, Iran, Syria, and Turkey) came together to create and to realize several on-site installations on the largest abandoned mining area in Sardinia Island.

The LandWorks Sardinia Operative Workshop is part of the international festival of ephemeral artistic installations, created by Prof. Stefan Tischer Director of the MMLU (International Master in Mediterranean, Landscape Urbanism, University of Sassari) at AA Master in Mediterranean Landscape Architecture in collaboration with Annacaterina Piras from the University of Sassari and Paola Serrittu University of Sassari.

The LandWorks International Operative Program has been set up in collaboration with local communities and representatives. The project promotes site specific experimentation with artistic installations in western Sardinia. The focus

is on the environmental, architectural and cultural development of the landscape, and in particular the sensitive, degraded, unstable landscape of the Geomineral Park UNESCO heritage site, inside the abandoned mining areas in the municipalities of Montevecchio, Ingurtosu, and Naraçauli.

The workshop started on the 21st of May and ended on the afternoon of the 31st of May, 2012. The project leaders were the following celebrated architects and designers: Ferdinand Ludwig (Baubotanik, Stuttgart), Christian Phongphit (SoA+D, Bangkok), Philippe Poullaouec-Gonidec (CUPEUM, Montreal), Craig Verzone (VWA, Lausanne), and Roberto Zancan (Vice Director-Domus, Milan).

There were 20 SoA+D students (from five programs and first to fifth year levels) who participated in the ten days international workshop with the supervision of Aj. Christian Phongphit. Prior to the workshop, they had a short tour (in 5 days which began on May 15 and ended on May 19) to experience Berlin's arts, and architectural

structures and designs. They also went to Rome to complete the two-day study trip (June 1-2) by visiting historical Rome, the Vatican Museum and one of the greatest icons of contemporary Architecture, the MAXXI Museum by star architect ZAHA HADID. LANDWORKS SARDINIA 2013 will be held in the last two weeks of May 2013, and it will be attended by 20 SoA+D students.

In addition, the documentary film about LANDWORKS SARDINIA 2011 (last year), created and directed by our CMD students who composed the SoA+D film crew (Bonus, Koafang, Moom and Tour) and who captured the amazing 10-day-event, is now available for order from this site: <http://landworks-sardinia.com/>. The 50 minutes documentary film (in high definition) shows the complete process from the first survey to the final presentation. Featured for example are Landscape Architecture icons Henri Bava (Agence Ter, Paris) and Martin Rein-Cano (Topotek1, Berlin) as well as the Vice Director of DOMUS Magazine, Roberto Zancan



05 JAPAN

12 - 17 June 2012

"Japan Field Trip" was a part of the annual study trip organized by SoA+D, Graduate Program. This academic year our graduate field trip was joined by 13 students (Mr. Christopher Potel, Ms. Hosna Tamleh, Mr. Korapat Sriavut, Ms. Pasunart Makanukhrao, Ms. Thanida Harnseree, Mr. Panasit Chaiyanan, Ms. Supasee Panusatid, Mr. Almanaz Gabriel Nicolas, Ms. Sarunya Khongmee, Ms. Kankeawl Putthianan, Mr. Chaowalit Suebsangin, Mr. Visarut Nutprayoon, and Mr. Arthit Lawsaku) studying in SoA+D graduate program.

Among the places visited during the six-day trip in Japan were the following: Office Furniture Design Center in Kokuyo, and Public Housing Project in Setakaya. Likewise, the group attended a lecture on "Graphic Designer Japan" and met the designer team at Tokyo Midtown Toshiba Design Center.

Led by Dr. Chokeanand Bussracumpakorn, Ph. D. (Chairman of Design and Planning Program), the field trip was aimed at developing knowledge in design and planning in Japan as part of the class in our international program.



06 NETHERLAND

31 May - 10 June 2012

The Netherlands is a new breeding ground for design and contemporary architecture. What's fascinating about Dutch architecture and design is its minimalist nature with a sense of quirkiness, its emphasis on functionality and its design approach towards the better everyday life. So...why not visit the Netherlands!

The Netherlands Design Study Trip exposed SoA+D students to the international designs in the Netherlands. Eleven students from Interior Architecture, Architecture and Industrial Design programs joined this trip. Led by Dr.Nuttinee Karnchanaporn (INA program lecturer) and Chanida Lumthaweepaisal (INA program alumna and current Sandberg Instituut student), we explored architectural design projects, interior designs and other design disciplines in various locations in the Netherlands. Amsterdam, Delft, Almere, Utrecht, Eindhoven and Rotterdam are the cities that we visited.



From Dutch design classics such as Gerrit Rietveld's Red and Blue Chair (1917), Schröder House (1924), and Dick Bruna's famous Miffy bunny character (1955) to contemporary architecture of Rem Koolhaas's Kunsthal Rotterdam (1993), Educatorium (1997), Mecanoo's TU Delft Library, MVRDV's Wozoco (1997), Solidam (2002), Lloyd Hotel and Cultural Embassy (2004), NDSM werf's shelter for the creatives, to collective design groups of Droog Design and Moooi, we explored them intensively in 10 days. Apart from visits to museums and cultural attractions, we also visited 4 design schools: Gerrit Rietveld Academie and Sandberg Instituut (Amsterdam), Faculty of Architecture, Delft University of Technology (Delft) and Eindhoven Design Academy Eindhoven (Eindhoven).



07 BANGKOK

Adaptive City 2045 Workshop
15 -22 July 2012

Three Interior Architecture students from SoA+D: Sitipat Rongronglap (Year 5), Pavita Srirattana (Year4) and Lapassarada Yostha (Year 3) joined the BKK Adaptive City 2045: Bangkok, a vernacular metropolis, running on water with 70 students from 10 architecture schools between 15-22 July 2012 at Faculty of Architecture, Silpakorn University. Along with Fokke Moerel (MVRDV), Jago van Bergen (van Bergen Kolpa), Dr.Chalay Kunawong (Ongsa Architects), Pitupong Chaowakul (Supermachine Studio), Yossapon Boonsom (Shmadesigns), Dr.Apiradee Kasemsook, Dr.Tonkao Panin and Dr.Supitcha Tovivich, Dr.Nuttinee Karnchanaporn from Interior Architecture Program of SoA+D joined the mid and final workshop reviews.

The workshop raised several questions: how can we reinvent BKK running on water? how can we balance contemporary architecture to the new (water) climate and how can we create metropolitan ambitions with 'small things that matter'?

The workshop acted as a time machine which had traveled back and forth between 'before the flood', 'during the flood' and after the flood' of 2011 - to learn from history in order to develop strategies for living in the future. The result was a research towards a new building typology, proving the adaptivity of every day program of an inner city location to the dynamics of water levels and population growth. The water managing strategy of that particular site can be used as an exemplary project for the city.



BANGMOD Goes Green

A Revitalizing Landscape Master Plan towards Sustainable KMUTT

SoA+D helps steering KMUTT's bright future on Green Campus

Research and Design Project for the new Land Use and Landscape Master Plan of King Mongkut's University of Technology Thonburi @Thung Khru Campus: Revitalizing University Campus into Learning and Green Campus

SoA+D helps steering KMUTT's bright future on Green Campus

As our university had mandated to advance its learning experience and campus environment, SoA+D's staff and faculty became the major force of KMUTT under the new aegis of PMU (Project Management Unit) in implementing new design planning that would transform the university's open space atmosphere in 3 locations of Thung Khru (newly changed the name from Bangmod), Bang Khun Thian and Ratchaburi province with special uniqueness of green campus.

For Thung Khru campus, SoA+D, led by Dean Dr. Weeraphan Shinawatra and Associate Dean for Administration, Aj Apinya Limpaboon and Aj Ekawat Ophartpongsakorn, initiated the design for the new central common space at the heart of the campus. The new design proposal will revitalize the learning ambiance of Thung Khru and fortify KMUTT's vision of "Green and Clean Campus" and "Educational Park". According to KMUTT's philosophy crafted in 2011, our campus space is aimed to be the garden of wisdom providing green and peaceful atmosphere to encourage enthusiasm for intellectual dialogs that support KMUTT to produce young graduates with greater knowledge and virtue for ameliorating our society. KMUTT also needs to upkeep with the world changing pedagogy in creating new learning environment in 21st century that is shifting from conventional classroom to informal, flexible and social interactive space. Moreover, as a leader for green university campus in Thailand (ranking no. 17 in UI Green Metric of World University 2010), KMUTT wishes to maintain its status in the global arena among world renowned green universities.

SoA+D's PMU team was honored to give a task of transforming our KMUTT main campus Thungkhru from an overcrowded cluster of warehouses and mechanical workshops into an ideal educational park. According to KMUTT's vision, the "Public Learning Space" of our campus will be comprised of (1) Educational display, (2) Venue for student's learning media, (3) Knowledge museum (4) International information center, (5) Network of alternative learning space throughout the university, (6) Space for multidisciplinary-task working 7.) Space for knowledge interchange, (8) Main street socialized space, (9) Effective space management (24 Hour University) (10) Safety and (11) Digital learning space. In order to accomplish the new design for KMUTT's Green and Clean Campus, the PMU team established the design and planning process as follows;



Fig. 1: Aerial Photo of KMUTT Thung Khru Campus showing clustered workshop buildings all over the site (on the left) and a perspective rendering portraying the atmosphere of the newly designed central open space of KMUTT

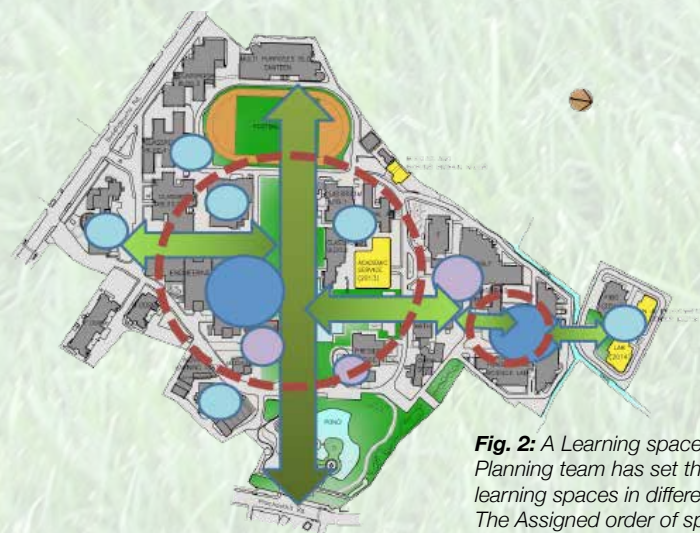


Fig. 2: A Learning space plan 2011. Planning team has set the order of learning spaces in different degree. The Assigned order of spaces and linkag,
RED DASH: Bike loop
GREEN: Pedestrian axis
PURPLE: Central Interactive space
BLUE: Center of Knowledge space
LIGHT BLUE: Demonstration space



Fig. 3: Assigned role of learning space to map the Space for Creative Learning in campus

1. Reshaping campus open space

The majority of mechanical workshop buildings that once occupied the central space of KMUTT Thung Khru Campus was removed paving the way for new design common ground as public learning space of KMUTT. This centralized green space will soon be connected to the main public space at the first floor of every building and create a continuing learning experience and atmosphere that bring neighboring community members, visitors, scholars, students and staff together as a whole.

Within this new direction, KMUTT will endorse lifelong learning experiences that encourage our staff, faculty and students for exchanging idea; sharing knowledge and working with community. The new design for common space of Thung Khru campus focuses on creating continuous green corridor that will unite plots of open space among buildings in the entire university together. This central venue formulates atmosphere, attracts learning activities from different buildings together and becomes central point of network for academic, innovative and lifelong learning activities.

2. Restructuring campus route

With the new central learning space, the entire campus will be well- oriented and connected by the 2 main green linkages that run in north-south and east-west directions. The north-south axis is the main corridor connecting community to main public facilities of the campus while the east-west axis is to connect dormitory and service zone to academic zone. These 2 main corridors are proposed as walk & bike inner loop routes that provide tranquil atmosphere and also reduce pollution. The conventional automobile route should be for minor transportation in the near future (Figure 2).

3. Mapping Learning Space and Behavior

After designing the heart of learning space and green corridors, the space at the first floor of every academic building needs to be redefined, reorganized and revitalized as public learning space that reflects the core value and social role of each academic unit in public arena (Figure 3). Primarily, the role of each learning space has been assigned to create dynamism that brings visitors to explore contemporary knowledge through the different academic units on campus as they are walking in a living museum. Each faculty and unit will be inspired to rethink space usage from KMUTT's immeasurable knowledge related to art, science and technology to ignite the imagination and strive to accomplish innovation. Finally, the human behavior for learning activities was analyzed to understand the new learning habits by which users tend to favor more flexible space arrangement. With the breakthrough in communication technology, learning process in 21st century can occur anywhere outside the conventional classroom at anytime of the day. Moreover it can happen in more diversity of thinking and interaction.

4. Designing Green Space for Learning Garden

As the university's aspiration to be the leader in green campus, landscape and interior architectural design with environmental concern become the main approach of making KMUTT learning space that reflects the knowledge of each academic unit before entering to the building's main functions. Each green space is essential to encourage cultural interaction, embrace international atmosphere for sharing knowledge, ensure inspiration, and enable flexibility for diversified uses and activities. The garden and its landscape elements are designed to echo experience from the inside space of classroom and laboratory to outdoor green and transitional space (Figure 4).



Fig. 4: The construction for new garden and open space is on the way



Fig. 5: The example of idea in making the garden that response to learning behavior, 7 learning spaces are applied into designing each zone of the garden

The objective of the project was to investigate cultural, social and physical relations to simulate and illustrate various environment characteristics in Bangkok with the aim to adapt to its (new) submerged condition, rather than resisting rising waters.

In the 4th architectural design studio, the last semester's work emphasized the aftermath of the flood crisis in Bangkok during the last months of 2011. The students were asked to investigate on situations related to submerged conditions, not as a temporary case, but as a permanent condition or paradigm of a submerged city. Emphasis of the studio - MODular FABrication LABoratory - was to explore what might the coastal metropolis Bangkok feel like in the future. The objective of the project was to investigate cultural, social and physical relations to simulate and illustrate various environment characteristics in Bangkok with the aim to adapt to its (new) submerged condition, rather than resisting rising waters.

Based on fundamental and context-specific meanings in the student works, the process formalized cultural and functional patterns in present stage to project those and to enable/simulate life in submerged conditions, where the notion of context was a critical feature to understand. With the introduction of **"Living Systems"** (Maturana&Varela, 1980) and the exploration and development of those in a variety of scales especially in regard of its configuration of relationships that determine essential characteristics ("pattern of organization"), the physical embodiment of those ("structures") and the activity involved in the continual embodiment of the pattern of organization ("life process"), the students produced various diagrams, models, photomontages, etc. to illustrate and comprehend each individual context, and therefore to be able to propose a (new) program and a scenario for a future life from today's point of view.

Submerged Architecture

VICTORY MONUMENT
Montakan Manosong



Students chose their individual context in the inner Bangkok and introduced a range of factors as being possible objectives for urban/architectural interventions to address and provide solutions for Sala Daeng/Patpong, Victory Monument, Yaowarat, Siam area and Chatuchak. Those solutions aimed to simulate and re-question city as well as architecture planning in the context of education, where the results were not only based on the capability of the students to analyze and relate information, but also in the ability to communicate spatial and formal complexity within this assumed (submerged) paradigm.

During the process, it became evident that Bangkok is not just a homogeneous unit: It is a very big city, exceeding ten millions of residents, much too big to make a sense monolithically. It would be easy to believe that only gigantic policy decisions and mega-projects could solve contemporary urban issues, which often lead to unsustainable development. Therefore, the studio looked at Bangkok as a collection of many small, diverse and overlapping districts (units) and enabled the investigation of people's needs/activities in their areas and their ways of relating to each other. Those investigations took part in developing a future scenario, where the human element and scale could reappear and Bangkok could begin to be manageable, and sustainable and could sustain the worst case of a submerged city.

YAOWARAT
Sumantha Nuamthanang



PATPONG
Achawin Laohavichairat



MOD FAB LAB 4.0 STUDIO

Studio Instructor:
Mr. David Mrugala

Students:
Achawin Laohavichairat,
Karunwiwat Peerapol,
Manjaiarn Kampanart,
Montakan Manosong,
Sumantha Nuamthanang



SIAM AREA
Karunwiwat Peerapol

Loop Collection

by Pattarapol Chantkam

Project name: The new type of outdoor furniture

Year: 2007-2008

Client: Moban by Kenkoon Co., Ltd.

(www.kenkoon.com / modernoutdoor.co.th)

Tek has been the first choice material for outdoor furniture for decades because of its unique qualities. However due to a concern of shortage of high quality tek in the near future as well as other environmental awareness, Kenkoon has started to look for alternative materials. Those materials have to fit the criteria of outdoor furniture.

(The chair is designed for outdoor and indoor use. Its main goal is to provide customers an alternative choice of material for outdoor furniture. Thus that was a beginning of this quest of finding such material.)

EPDM (Ethylene Propylene Diene Monomer) rubber was finally chosen due to its property of being UV, heat, tearing, chemical and micro-organism resistant. Moreover, it can keep its flexibility at high and low temperatures. Examples of products made from this material: automotive hoses, rubber-seal for doors and windows and wiper; window channeling; sealing membrane for building facades and other architectural rubber products that require resistance to weathering.

LOOP's EPDM seating therefore provides flexibility for comfort, yet strong enough to take load and can be totally used outdoor. Sustainability has also been one of Kenkoon's main concerns. Materials used in this collection are safely produced and non-toxic. The design of the chair is a result of the idea that each component can be taken off or separated according to the type of material for recycling. In this case only two kinds of materials is used: stainless steel frame



and the rubber. At the end of its life, the rubber part can be easily replaced and sent back for the recycling or reuse processes.

Recycled Material Design



Nut Bench & Pepp Chair

by Pattarapol Chantkam

Project name: Pineapple fiber paper furniture

Year: 2006-2007

Client: Yothaka International Co., Ltd. (www.yothaka.com)

The furniture is made from pineapple fibre paper. Its original idea was created by Yothaka (one of the leading furniture companies in Thailand). I was hired as a material and design consultant and helped develop the idea and designed some chairs.

The paper is made from pineapple's leaves collected from pineapple plantations in Thailand. Generally what is left from collecting the fruits is mostly the leaves and they have been burnt (air pollution!), made into animal food or just buried to decompose. Making furniture from the leaves would make a better use of them and equally important it would create more income for farmers.

Even though they have been supplying the leaves to pineapple fibre paper manufacturers, they're only in very small numbers. Now they can send a lot more! And the paper manufacturers would benefit from this by being able to sell many more papers to furniture manufacturer (which is Yothaka).

Pineapple fibre paper is usually used to make stationary (papers, note book, and gift wrapping paper) and other decorative items (place mats, dolls etc.). These products are much lower priced comparing to furniture. This furniture uses hundred or thousands of papers for each chair or bench and costs reasonably much higher! That apparently results in creating a lot of work and income for everyone in the chain, more importantly for the farmers.

The furniture itself is designed for commercial use, so they all can really be used in real life. Water can make the paper seat wet but just let it dry and it will get back to its original shape and colour. But its beauty lies in the idea of the seat being able to be changed to a new one with preferred colour and pattern chosen by customers. The paper seats can be taken off from the frame easily if customers want to get rid of the old ones (biodegradable of course, but the recycling mean is preferred!). The seats can be recycled by sending them to the furniture company and they would send them to the paper manufacturers to regrind and mix with new raw materials to make pineapple fibre papers again. Customers can choose to replace the whole seat or part of it by ordering new papers from Yothaka and it's quite easy that they can even assemble the paper and chair by themselves.



Fitch Stool & Chair

by Pattarapol Chantkam

Project name: Fish skin furniture

Year: 2008

Client: TCDC (Thailand Creative and Design Center)

Fitch Stool and Chair use discarded fish skins (Pla-nil) from the food factory to make the seats. Surprisingly the fish skin is stronger than the cow skin pound to pound. It has shown the big potential in upholstery furniture as an alternative to the leathers from cows.



3D Wall Tile

by Pattarapol Chantkam

Project name: Fish skin furniture

Year: 2008

Client: TCDC (Thailand Creative and Design Center)

These tiles are made of selected agricultural and factory wastes such as wood chips from wood factory, eucalyptus pulps from paper factory and ginger pulps from food factory. They are moulded in 3 dimensional forms with elaborated patterns to prove how fine the details are provided. These tiles can be an alternative for the ceramic, plaster or concrete wall tiles used in indoor with more freedom in creating details and patterns.



Reused Playground & Bookshelf @Yut Ta Kan Koo Lok

Playground supposes to be the place where children can play and learn to develop their intellectual skill of sharing things among their friends. There are many more children who never have such a good playground space in their community with many reasons. The design team led by Aj. Thayuth Thongpan and Aj. Karuna Kluebmongkul from Interior Architecture Program of SoA+D had a chance to create a set of toy for unfortunate children in Rangsit Babies' Home at Rangsit Klong 5; it was a kind of competition which was sponsored by Yut Ta Kan Koo Lok program @ Thai PBS TV channel. The program itself relied on recycling concept in order to save an environment; therefore, our students tried to look for some of reused stuffs, then the final answer came with **"bicycle inner tube"** and **"used truck tire"**. The set of **"reused playground toy"** was created in series like the various kinds of shapes and forms such as honey comb trampoline, circle pumping step, truck tire loop and more energy with reused plastic bucket drum. More and more children were in queue then waited to play again and again; they jumped around, ducked the big loop; some drummed and sang, looking so happy and joyful. For us, this meaningful moment of orphans is more precious than the trophy.



Team members

Mr. Pattarapol Thonghaem
Mr. Nuttapol Sungsawangthum
Mr. Narupol Kanchanapas

The Khong Ta Kaey School's library was destroyed by the Thailand flooding crisis in the year 2011. As a result, the victim school would like to have a new bookshelf in a limited budget of 500 baht. The design concept from SoA+D team is the submarine and whale with reused materials. The bookshelf is moveable to the dry place. The smoking bin is designed as a submarine telescope and the inner tube was used as a reading seat. The team got the first prize from the students' and principal's vote. It was broadcast on Thai PBS on Feb 18, 2012.



Submarine Bookshelf for Khong Ta Kaey School, Nonthaburi province

Mr. Poowanut Tippitak
Mr. Boorawat Pungtakoon
Miss. Lucksiga Siwamonkolkul

Common Ground

SoA+D participation in the 13th International Architecture Exhibition "Venice Biennale"

School of Architecture and Design (SoA+D) participated "Venice Biennale" the 13th International Architecture Exhibition between August 29th until November 25th, 2012 at the Giardini della Biennale and at the Arsenale as a part of Thai Pavilion: Representing the Associations for the Siamese Architects under Royal Patronage(ASA) and Ministry of Culture (the Royal Thai Government). This is a collaboration of lecturers and students from Architecture and Interior Architecture programs.

"Common Ground" is a theme entitled by David Chipperfield for the 13th International Architecture Exhibition. Old and New, the intervention of new architecture in the city is such a point of common ground we are interested in, and became a concept of "Shall we preserve?" The preservation process of existence which remains and continuously goes to the future is not only for physical existence, but also for an abstract part of heritage- activities that might be preserved for the antecedent. The issue of preservation begins with an exploration of city space between modern architecture and historical site or historical architecture. The question is still ambiguous. How can old and new be blended together and in which degrees? Where is the balance of the contradiction? The different perspectives of architects, people, and investors on the common things between old and new are waiting to be explored and shared. Is this the illusionary effect of modern architecture and modern city to make our living better?

FROM PAST TO THE PRESENT

"The moving world makes common thing uncommon everyday". The rapid change is a part of our life according to the developments and influences in order for us to be "better" in all aspects: economics, education, political, social, etc. These developments affect the city, like for example, construction of high rise buildings, economic growth, modern infrastructures including both physical and institutional, and vertical space consumption. Nevertheless, that "every coin has two sides" is similarly related when the development comes closer; it slowly leaves our memory behind, and moves us away from the originality of culture and history.



References :

www.asa.or.th
<http://www.labiennale.org/en/architecture/news/17-01.html>

Working team :

Instructors

Dr. Weeraphan Shinawatra (DEAN)
 Aj. Apinya Limpaiaboon (Associate Dean for Administration)
 Dr. Nuttinee Karnchanaporn (Lecturer, INA program, correspondent with ASA)
 Aj. Ekawat Ophartpongsothorn (Lecturer, ARCH program)
 Aj. Duangkamol Limwongse (Lecturer, INA program)

Students

Ms. Anima Russameeruttayadham *Architecture Program*
 Mr. Pongsapak Boonvacharee *Architecture Program*
 Mr. Sittipat Rongronglarp *Interior Architecture Program*
 Mr. Wasuwat Thankitkul *Interior Architecture Program*





TOY : BBL

School of Architecture and Design in conjunction with the learning institute collaborated with the Office of Knowledge Management and Development (OKMD) to create a workshop for Brain-based learning toys (BBL). The objective of the project was to create a BBL curriculum and to deliver 10 prototyping toys. The event included publishing a statement on Aug 16, 2012 at TK park, Central World. Starting with the Director of OKMD, Mr. Pramote Wittayasuk gave a speech on the BBL. Vice President of Educational Affairs of KMUTT, Asst. Prof. Bundit Thipakorn talk about constructionism and LEGO for teaching and learning. Director of the Office of Project and Knowledge Management, Mr. Pradit Ratanawijitrasilp announced the workshop's schedule and applications. After the publishing the statement, three guests were invited to tackle the issue of existing toys and the development of children's brain. Ajarn Supaksri Weswiboon who is our special lecturer gave a speech on toy design and Ajarn Pornpilai Lertwicha and Assoc. Prof. Nichara Ruangdaraganon described the toys in the context of BBL and neurology respectively. There were approximately 150 participants joining the program including the famous toy enterprises. After the seminar, we hope that our curriculum can help the toy enterprises to create an innovative product for them.



Formula Car Design

This exciting project is a joint collaboration between the Department of Mechanical Engineering (ME) at the faculty of Engineering and Industrial Design (ID) Program at our SoA+D. ME has started to send their cars and teams to the **"Student Formula"** Competition by the "Society of Automotive Engineering of Thailand" for several years before collaborating with our ID program. After a couple of years of engineering, KMUTT's Black Pearl Team became one of the top teams in the competition; however, their design was "one of the most awful" according to Associate Professor Dr. Surachate, the manager of the team. He approached Aj. Nimit Mengveha and Aj. Apitan Lee in early 2011 to see if we could join their team to bring vibrant and aesthetic quality into the car.

In April 2011, we began to organize a design team comprised of 4th year students to work on the project with engineering students. In this attempt we also partnered with our adjunct instructor Aj. Krit Phutphim who has experience in auto industries. He brought a lot of expertise and also his connections to help students to go through each process. In this project our design team had to do everything from sketch design, clay modeling until building car body from carbon fiber using hand layup technique. In this process students learned to build their own custom tools, using clay, for the project and to measure their design that required strict accuracy, quality / production control at vendor's factory and finally to work with people from other discipline towards a common goal. Finally the car was complete and ready for test run at the end of September 2011.

At the competition, more than 35 teams from universities all over Thailand competed in various challenges including: design, cost, presentation, acceleration, skid pad, autocross, endurance and fuel economy. As a result, we won the second prize with top score on 3 challenges. design, cost, presentation.

Ultimately, the experience from collaboration in this project not only helps participants to learn designing a car and teamwork but also serves as a prototype for building stronger learning process of transportation design and strengthening our relationship with School of Engineering, which leads to further collaboration in several transportation design projects and competitions. It helps building both parties to learn and grow up to be automotive R&D professionals in the future.





Alumni won Domus Scholarship



DAS: Hello Ploy, please introduce yourself

My name is *Harisadhi Leelayuwapan (Ploy)*. I graduated from School of Architecture and Design, Interior Architectural program,

KMUTT in 2010 (Batch#12). After my graduation in 2010, I joined the interior design team at P49 Design and Associate in Interior Designer position. I work here for almost 2 Years. My responsibility is to design, to have construction drawing, and to coordinate with both owner and contractor.

DAS: Yes, It is almost 2 years since you graduated from here; do you still remember the school moments?

Yes, sure my school life is really great experience. During my study at SoA+D, I'm really happy and I enjoy. I think our school definitely gives a freedom to learn. The students can think out of the box, can experiment their conceptual ideas by themselves. This makes me very excited and very enthusiastic to learn.

Moreover, the experience I got from school can also be adapted to my work. In addition to the knowledge in classroom, I still remember the off-class relaxation moment with friends with seniors and juniors. I think the closed relationship among SoA+D family still remains in my memory.

DAS: While studying, have you been participating in any competitions or events, please share?

Well, when I was studying, I submitted my Thesis project: Needlework Creative and Design Center to the project/thesis competition. From that project, I got award from Degree Show 2010 done by Art 4D magazine and TIDA thesis awards 2010 from Thailand Interior Designers' Association. I also participated in TIDA THESIS SHOW 2010 at CDC. My project was selected from TCDC to be shown in Ploy Saeng festival at TCDC and was published in the Wallpaper magazine, Thailand.

DAS: About being Domus scholarship candidate, How ?

I am actually looking for master degree study and I am personally interested in this institution. The reason is that Domus Academy Italy is the quite famous institute in applied design. The teaching methodology emphasizes professional practice eg. workshop with the top company in Italy. Apart from the teaching method, I think Milan is a town of flourishing art, architecture and fashion

and also being original of many international famous brands.

After a while, I got the scholarship competition from Domus Academy agency in Thailand. The objective of competition is to encourage anyone who is interested in studying at Domus Academy to submit the project for study supporting fund. The topic of this competition will be divided into Domus academic subprogram. I submitted my work to the Interior and Living Design program and won the Special Mentions Award; this award is scholarship covering 25% of the total tuition fees.

About the competition detail, the topic is Intimacy guestroom, to design hotel room under the concept of "Intimacy". I initially started from the wording translation. "Intimacy" means close or warm friendship. I accentuated the familiarity of user and action commonly happening in hotel room. My design was under the concept of 60*60 guest room. This conceptual idea came from the hypothesis of human activity analysis mostly related to the physical magnitude of sizing 60 cm. eg. 60 cm. seating, table, 60 cm. length, 60 cm. counter height, etc. This hypothesized concept was transformed into interior architectural design process through form of Grid-Line and Module 60*60 cm.

Imagine that the activity inside the hotel room is adjustable both vertically and horizontally which follows each personal intimacy sensation.

Das: Do you think why they selected your work ?

I personally think that it is because of my design concept which is the combination of fresh innovative idea and the most basic principle of human ergonomic for spatial creation responding to human needs.

Das: When the school opens, are you ready ?

I will go to study Master of Interior and Living Design at Domus Academy this autumn/winter in September. Now I'm practicing and learning Italian language before school opens.

Das: At the end, do you have anything to say to your SoA+D juniors ?

I would like to tell you, guys, to spend your time to explore and experience everything during your school life as much as possible. Don't be shy to think and to experiment any fresh idea. School is as same as experimental field to encourage us to have a new and creative idea.

SoA+D won Flood Competition @ TCDC

As many of us experienced the flood around Thailand last year, the awareness in preparation for emergency situation and natural disaster gained more attention.

Creative Thinking is believed to be fundamental key to propose such solutions. 'Design for Flood Contest' organized by Thailand Creative and Design Center(TCDC) in May has shown the fruit for this attempt.

Among seven types of works in the competition, two 3rd year Industrial Design students, Ms. Yotsawadee Luetrakulset and Mr. Vatcharanont Kongchatthai, have brought their design proposals to win the awards in the categories of vegetable garden kit and disease diagnosis kit. Prior to the design competition, the class of 3rd year Industrial Design students and teaching team comprised of Dr. Choojit Treerattanapan, Nanthana Boon-la-or, Woranooch Chuenrueedekamol and Apirom Kongkanan, have committed to the research project on Thailand's recent flood, supported by TCDC with the collaboration participative of professionals and academic design institutes since November 2011.

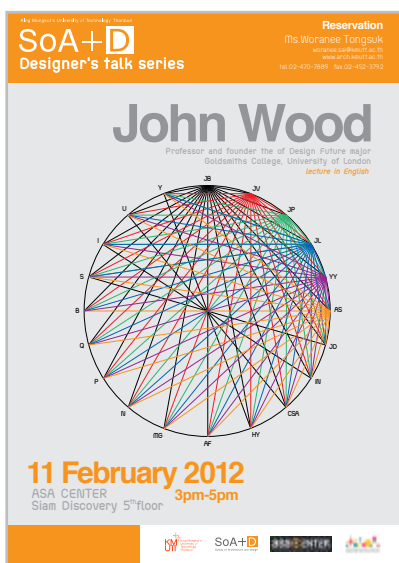
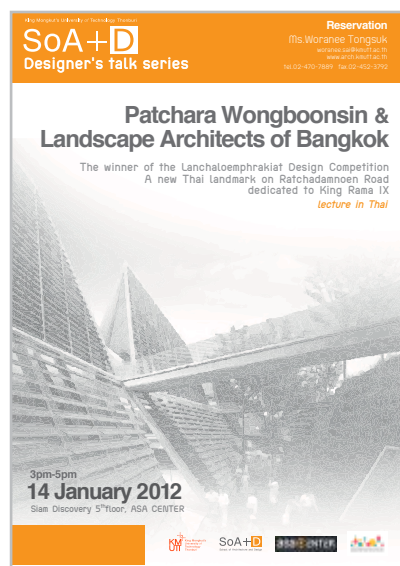
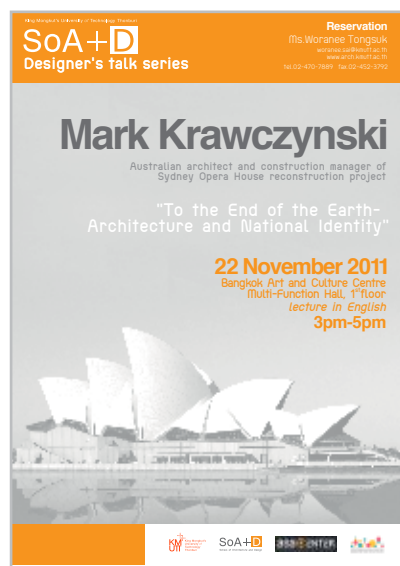
As the risk for water-bourne diseases always comes with the flood especially in remote areas, the disease diagnosis kit comes with the paper chart that users can diagnose themselves before seeing the doctors, as well as the guideline on basic treatment.

Our research found that many people experienced the food shortage during the flood. This self-reliance vegetable garden kit comes in a handy calendar size, explaining what and how to grow your own food.



Designer's Talk Series

SoA+D sets its name in the city



The School of Architecture and Design, King Monkut's University of Technology Thonburi hosted "Designer's Talk" Series which was initiated by our dean, Dr. Weeraphan Shinawatra. The five public lectures were considered as proactive activities to promote the school's commitment as an international design school in Thailand. Given by nationally and internationally acclaimed resource speakers with vast knowledge on design issues, these talks have distinctive features to benefit students, professionals and young designers: Moreover, this is our contribution to public by hosting these lectures at the heart of Bangkok, Our public lectures were held at Bangkok Art and Cultural Center (BACC) and Associate of Siamese Architects Promotion Center (ASA Center) which are renounce bussiness and commercial venue.

(Talk 1) **"To the End of the Earth-Architecture and National Identity"** given by Mark Krawczynski (a famous Polish-Australian Architect) elaborated the Australian cultural and architectural evolution over 230 years, significantly including Australian's national icons along with film viewing of "Out of the Ashes - Warsaw Story" showing the reconstruction of the whole city almost totally destroyed during the World War II. The film focused on the renowned architect's father, Zbigniew Krawczynski, who was one of the chief architects in 1950's. The rebuilding of the historical town, Warsaw, included the preparation of the reference of historical data such as a giant drawing of old town, and collective memories of survivors. After 12 years, the town was completed and listed by UNESCO as the World Heritage in highest category of recognition.

(Talk 2) The lecture was made up of two subjects: first lecture focused on "Orizonti" (new trend) – a short film made from the latest Venice Film Festival 2011 by Mr. Wattanapume Laisuwanchai, a Communication Design student and author of the thesis-**"Passing Through the Night"** along with his advisor, Aj. Soraya Nakasuwan; the second topic was given by Professor Rainer Schmidt, Professor in Landscape Architecture at the University of Applied Sciences in Berlin, Germany. Prof. Schmidt is a famous landscape architect and urban planner who has been designing and implementing projects on different scales for more than 20 years in Germany and abroad specifically in the regions of North Africa, Middle East and Asia.

(Talk 3) The main subject of the lecture was the works of Touchapon Suntrajarn and LAB (Landscape Architects of Bangkok), the winner of the **"Lanchaloemphrakiat Design Competition"**-a new Thai Landmark on Ratchadamnoen Road, which is dedicated to King Rama IX.

(Talk 4) **"Lecture Talk and Performance Installation: Meta Design + HAPPY DAYS"** was a public lecture focused on two-fold discussions given by John Wood, Emeritus Professor of Design, Goldsmiths College, University of London and Ms. Alma Tischler Wood, performer and artist. **"Meta Design"** (which raises the failure issues of design to deliver effective solutions to the environmental/economic crisis; how design needs transformation; what opportunities might open up our society, enterprise, urban planning; and what these changes might mean for the way designers are taught) and **"Happy Days"** (an ongoing series of two and three dimensional paintings as well as videos and drawings that the artist began in 2000, the start of the new century and a work, based on the seven colors associated with each day of the week in Thailand).

(Talk 5) **"Experimental Work by Supermachine Studio"** was a lecture by Mr. Pitupong Chaowakul, founder and leading architect of Supermachine Studio in Bangkok.



Welcome activity for freshman

SoA+D Freshy Orientation Camp :
PROTECT COASTAL LAND in Bang KhunThian

The freshman orientation camp started in July 2012. School of Architecture and Design (SoA+D)'s first year students and faculty members participated in SoA+D Freshman Orientation Camp with meaningful activities. This program for freshmen created learning activity guides which integrated activities of classroom and extra-study trips. Learning activities were intended to be fun and inquiry-driven for students and supportive for instructors.

SoA+D is located at KMUTT's Bang Khun Thian international campus adjacent to Bangkok's only coastal line part of the Gulf of Thailand. Instead of smooth beach sandy area, the 5-km. long coastline here is muddy wetland of mangrove forests and shrimp farms. This ecological sensitive forest area along the coast of Thailand has been damaged due to stronger tide and clearing area for shrimp farming business by local owners. Therefore, SoA+D provided trips for replanting the mangroves in the Bang Khun Thian area at Klongpittayalongkorn School. This event helped SoA+D in strengthening relationship with Bang Khun Thian communities. The focus of this event was not only transplanting mangroves to revitalize coastal land in Bang Khun Thian but also educating students for the awareness and significance of the unique ecosystem in our country. From this event, our SoA+D's freshmen learned more about their new SoA+D's neighboring environment and its critical condition. Our new students were not only cultivating friendship among their cohorts but also strengthening SoA+D commitment to our Bang Khun Thian communities as well.



Re-Making of NangLerng

Architectural Design + Studio Work Integrated Learning



Our 3rd year architectural studio project is now operating under the aegis of Work Integrated Learning (WIL) aiming for providing opportunity for students to work with real client. As such an old urban community of Nanglerng in inner Bangkok was selected as the 'Live' project. The students worked with the community within two months and finally proposed the design solution for the community members. With the unique urban and historical context, the area of the old abandoned school in the community was selected for the design project. Schedule for workshops, interview frameworks, questionnaires, and discussions in small groups were prepared and tested in the studio. Through the community participation, the final design proposal provided some concrete outcomes and thus architectural design could be the tool in developing and remaking of the community.

The studio critics were quite satisfied with the project, and it was well received as successful project even though students were tired at the last stage of project. Details and some of architectural design need to be more taken care and put in. The students strenuously conducted during the intensive field works and research, thus delivered back conclusions and program for the community. At the stage, when 'architectural design tasks' were given on the individual work, some of them lost a few points regarding the participatory design process, and acclaimed a more traditional architect's role- design for the sake of architecture. They wasted some time testing some floating ideas, but in the end, they retrieved and did give a more sensitive and modest design. They did great presentation and could catch hold the essence of the project. Overall, I think that the students, and this studio, learnt a lot from this community project. As an academic institution, we should encourage more of this domain with real project as such, and keep supporting this good atmosphere, so that they could become a more practical and useful architect in the future. Yes, we also need to adjust some stage and content of the design requirement, but it was a good try. I hope that this will be continuing in our school and in our profession.

Studio Team: Waraluk Pansuwan, Songsuda Adhibai, Ponlawat Buasri, Seadhar Jirawatnotai and Kisnaphol Wattanwanyoo



Postgraduate stories

Life Beyond Instagram,
Photography as Inquiry



Has there ever been a time when so many people have produced and circulated so many photographs? If recent statistics from the photo-sharing social network Instagram are to be believed, the answer is a resounding no. Over 200 million images have already been uploaded to this site alone. Take Facebook and the others into account and the number must be fast approaching a billion. Nothing counts these days—it would appear—until it has been photographed and uploaded. But as the work of a recent graduate from the MfA in Communication Design reminds us, there is much more to photography than endless spectacular personal display. In the right hands, the medium displays a critical edge that can still surprise and move us.

Teema Muekthong's graduation project used photography as a form of visual inquiry into social change. Born in Haad Yai, Muekthong came to Bangkok to study the BfA in Communication Design at SoA+D and stayed on to take his masters degree. "I was looking for a project" he told me, "then one day I realized that I was surrounded by one! I was living near the old Sam Yarn market and the area had been set aside for 'redevelopment'. The bulldozers were arriving and the local residents were struggling to find ways to deal with the destruction of their neighbourhood. I just knew that I had to find a way to engage with what was happening."

Reaching for his camera, Muekthong took the first of what was to become a remarkable and powerful series of images that documented the erasure of a historic and vibrant urban community and the displacement of longstanding residents. Working as part artist and part ethnographer, Muekthong became increasingly engrossed by both the destruction of the community and local people's responses to it. Interestingly, he also started to get noticed: "As the weeks passed, local people began to ask what I was doing and why. Many also asked if they could see the images I was taking of them and their dismantled community." The possibility stuck in his mind and towards the end of his studies Muekthong hit upon the idea of exhibiting his work in what was left of the community and inviting locals to see and talk about what they had experienced.



WIPO

SoA+D students' work selected to be shown at World Intellectual Property Organization Exhibition



School of Architecture and Design, KMUTT, Industrial Design student's bamboo wicker products, in collaboration with Bangchaocha local craftsmen, were selected to be shown at the Ministry of Foreign Affairs of The Kingdom of Thailand, which organized Reception and Exhibition titled King Bhumibol Adulyadej and the WIPO (World Intellectual Property Organization) Global Leader Award, on 26 March 2012.

To celebrate the Auspicious Occasion of His Majesty the King's 84th Birthday Anniversary on 5 December 2011, the Ministry of Foreign Affairs was honoured to organize the Reception and Exhibition titled King Bhumibol Adulyadej and the WIPO Global Leader Award on 26 March 2012 from 18.00-20.00 hours at Vithes Samosorn Hall, Ministry of Foreign Affairs.

The Exhibition was organized in recognition of His Majesty the King's remarkable accomplishments in innovative and creative works, which promoted development at the national, regional and international levels and led to the presentation of the WIPO Global Leader Award by Dr. Francis Gurry, Director-General of the World Intellectual Property Organization (WIPO), to His Majesty the King on 14 January 2009 at Klai Kangwon Palace, Prachuab Khirikhan Province.

And to coincide with the first visit back to Thailand of the WIPO Director-General after the above award presentation ceremony, the Ministry organized the Exhibition and Reception to commemorate the event, hosted by Mr. Sihasak Phuanketkeow, Permanent Secretary of the Ministry of Foreign Affairs. The Director-General of WIPO, together with members of diplomatic corps and international organizations, as well as representatives from relevant public and private agencies, the academia and media, participated in this Reception.

The Exhibition featured some of His Majesty the King's distinguished accomplishments in intellectual property and innovation for the development of local communities. It was also an occasion to launch a book entitled King Bhumibol Adulyadej and WIPO Global Leader Award, published by the Ministry of Foreign Affairs to celebrate the auspicious occasion of His Majesty the King's 84th Birthday Anniversary on 5 December 2011. The Exhibition also featured WIPO-Thailand cooperation in the Project on Intellectual Property and Product Branding for Business Development in Developing Countries and Least-Developed Countries in three pilot local communities, namely bamboo wicker products from Bangchaocha sub-district, Angthong province, developed by KMUTT School of Architecture and Design students, tapestry woven textile from Maejam district, Chiangmai Province and brocade silk from Lampoon Province.



Exchange Student, Belgium

SoA+D fortified Thai-Belgian relations with LUCA



Ever since 2007, SoA+D has developed a steady working relationship with the St. Lucas Department of Architecture (now renamed LUCA School of Arts) in Belgium. Asst. Prof. Koen De Wandeler, teaching both at St. Lucas and in SoA+D's graduate program has been assuming a key role in this process. Initially, SoA+D hosted master students from Belgium for short-term inputs in SoA+D research projects (e.g. Bangkhuntien Master Plan Development, Bangkok Night Map, etc.). Later on, the school welcomed guest-lecturers from Belgium. With the renewal of the MOU last year, the collaboration sought to establish a more balanced exchange: in May 2102, Mr. Kisanaphol Wattanawanyoo visited LUCA campuses in Brussels and Gent and presented a special-lecture in a mini-seminar of the "Spaces" Research Group. In August/September 2012 the first student exchange took place: 4th year B.Arch. student Chawapol Watcharasukarn is following the 1st term of LUCA's International Master program; Mr. Broes Cottyn is following the 1st term of the SoA+D's Master program and will extend his stay to prepare his final Master Project on an urban architectural design project in Lopburi. His work will be in collaborative team with Ms. Supattra Khamwong, 5th year student in Architecture Programme.

In November, a first jointed SoA+D-LUCA workshop is scheduled in Nang Lerng Community. And next year, the activities would include a further exchange of visiting professors, a LUCA/ SoA+D/ REDEK exhibition when the Thai-Belgian bridge will be re-opened after renovation works, as well as inputs by SoA+D undergraduate and graduate students in LUCA's International Student Conference. And who knows what exciting events and activities the next years will lead to?

Koen De Wandeler, Bangkok, 25 October 2012



DAS Social 19

We are what we eat

The Neighbor Program's Exhibition @ TCDC

The Neighbor Program presented The Exhibition "We are what we eat" on 7th of July at TCDC, The Emporium with the collaborative workshop of the young designers from our neighboring countries: Thailand, Singapore, Malaysia and Indonesia

The workshop has been initiated since 2011 in Singapore by 16 young designers from 4 Institutes (Lasalle College of Arts, Singapore / Dasein Academy of Art, Malaysia / School of Architecture and Design, KMUTT, Thailand / Binus University, Indonesia) with the topic of "We are what we eat", because of the unique identity of Southeast Asian foods in all aspects including packaging, flavors, or cooking process. These elements extinguish ideas to create works.

One of the objectives of this project is to communicate and share experiences of people in different countries. It was interesting to see these young designers working together, making use of social network communication such as Facebook and Skype. They have developed artworks together since 2011 in Singapore and finished the final process in Thailand. The Exhibition was warmly received: many people in the industry either Thais or foreigners traveled a long way just to participate in the event. Most participants of this project, in particular teachers and students, commented, "This project provided a good experience. They met new friends, and saw the way of thinking of people in other countries and cultures" and now they got 16 more friends from 4 new countries. The highlight of this event was the "Designers talk", where famous designers of Asia '108 team' came to share their insights starting with Joseph Foo, the founder of 3nity, Malaysia. With his interesting project, 'Hope Project, Man & God. Jackson Tan, famous designer of Singapore, the founder of Phunk studio. With his graphic concept that was shown all over the world. Eric Chen, Branding Director of Gamania, Large online game company. With his cool office design that was inspired by Star Trek. And finally Chris Lee, the well known designer from Singapore and the founder of Asylum Creative Agency and many of his works including how he can transform abandoned building into a hip office or his Johnnie Walker house in Shanghai.

All the designers came together for this event to show the potential of the Southeast Asian to the world. And in the future, Neighbor Program could be a Hub of Design in South East Asia. The start of the greatest future of Neighbor Program, which we will have to follow when and where this journey will lead to.

Source: <http://www.dooddot.com/blog/view/207>

Project leader :

Kentaro Hiroki, Chairs of Communication Design Program

Cheksant Gangakate, Lecturer; Communication Design Program



Memories of SoA+D Alumni

Kittima Laochoojaroenkit

(Lisa) from Class 2002 (8th Class) Architecture Program, just graduated from Chalmers University of Technology in Gothenburg, Sweden, with M.Sc. in Design For Sustainable Development.

How did studying at SoA+D/KMUTT shape the way you think about the world, life and future?

"I have to refer to my teachers and lecturers, Thai and foreigners, who passed their knowledge to me. From my Thai teachers I received knowledge about local architecture, climate, and other aspects involved in the designing processes. At the same time I got the opportunities to gain more as a professional from the teachings of my teachers who came from different places in the world. Their international experiences were offered to me and they assisted me in broadening my perspective, and in shaping my views on architecture.

I believe that in our line of profession, it is imperative to have knowledge on both local and international methods and practices. The latter is essential to address the varying issues



of each project and to offer high quality of services. With my solid background, I was able to establish myself through my studies and experiences locally and internationally. It allowed me to better understand myself and know what I should do to achieve my goals. It has been a very important and valuable experience to study here."

Can you describe your program and SoA+D in 3 words?

"Good Thinking" - "Well Doing" - "Speaking your mind"

Krit Chandremak

I am Mink and I joined the 7th class in 2001.

What is your current career/position? In which organization are you in?

"A year after I graduated, I moved to Hong Kong to work at an American firm known as HOK International involved in sustainable design and technology. Being a part of the firm has given me wonderful experiences like making buildings more than living places. "HOK We care!". We have 25 offices branching out all over the world with interior planning and architecture department within each office. One benefit of having so many branches is the collaboration. For one project, we can have planning team to start

with master plan; architecture team can start designing the key building before handing it to the interior team. By doing this, it will help us to shorten the coordination process and all money will also go into our pocket. Another thing is that, if we don't have enough manpower, we can always ask for help from other offices. Basically, we gather and share the same resources. This is one example of how we work as a corporate."

How did you feel when you were about to apply at SoA+D?

"English seems to be one of the biggest problems to study in this school. Yes, I do agree. English is not our mother tongue but it's just a little bridge to bring us to the knowledge. There are millions of more exciting things out there waiting for you, but too bad that they are in English; it's up to you if you want to grab them."



Worawan Mookarasakul

entered SoA+D in 2004 (11th class), working in Singapore at M/s JGP Architecture (S) Pte Ltd. as an architectural designer.

What/who/where is the most memorable moment/ person/ and place when you were studying here?

"Firstly, my advisor for thesis- Aj. Daranee taught me a lot about practical design. Next is my lecturer, Aj Tee (Tawitsee), who enlightened me to understand about the basis of design and its process. Lastly, our administrator, P'Ja who was always helping us to handle and resolve all the administrative matters such as enrollment, and registration for every semester. Nevertheless, I have to say "Thank you, for all the SoA+D architecture lecturers who showed their kindness, and patience and who shared their knowledge with me." The skills which I have learned are applicable to my work in the architecture firm. For instance, Aj. Joo taught us about 'Building Materials and Construction Drawing Module'. I even brought her textbook to Singapore as a reference and teaching guide for my work in Singapore.

In addition, Aj Pong and Aj Jeab taught me about site planning in a fun and enjoyable process. Site planning module is very helpful when I need to prepare the master plan. The most memorable place is the Architecture studio because I have spent most of the time studying, resting and rushing for thesis and project through the night with all my classmates. The studio brings back many wonderful memories during my school days at SoA+D."

Can you describe your program and SoA+D in 3 words?

"Interesting, challenging and abstracting concept"





Nicha

Nicha Assarattanakul

Class 2008 or 15th Class. An architecture intern in MAD Architects, Beijing, China

How did you feel when you were about to apply at SoA+D?

"I was worried about the differences of the educational system between New Zealand and Thailand, but SoA+D offers an international/English program which has made things easier for me. Honestly, I was afraid because all of the candidates had to be well-prepared with their architectural drawing skills and to be fully equipped. I remember my entrance paper with which I had to show my struggled architectural drawing skills, but the critics understood and listened to my ideas and designs. I realized that they were very open-minded and that they were ready to accept different views."

What/who/where is the most memorable moment/ person/ and place when you were studying here?

"I would say that it was my architectural class of 15th that had made everything. "Studio Green and Orange" was the studio in my 3rd year, where my year group and I spent most of our time together. We lived; worked; taught each other; helped; hanged-out; and practically grew up together. We had our good times during our days in the program. I had found myself falling deeply attached to the place and people because of unique and friendly environment. It has been a place where everyone could be themselves."

How did studying at SoA+D/KMUTT shape the way you think about the world, life and future?

"SoA+D will always be the place where I have earned my career. It taught me to push myself to a certain point, and I discovered that an architecture had been a part of me. Architecture involves many things such as "artistic tested", life styles, observations, sensibilities, problem solving and cultural adaptation. There are no boundaries for creativity in this world, but architecture makes them possible. Mixing local thinking and creativity based on reality which is the most important thing that I have found in SoA+D. I think these are the tools that I have gained throughout the years in SoA+D, which I can apply to whatever I want to pursue in the future."

Can you describe your program and SoA+D in 3 words?

"Experiencing, exploring, and growing"

What is your recommendation for new students who want to come to study here?

"SoA+D would be a great place for your career growth and you will find everything that you are seeking for in the faculty. SoA+D gives you opportunities to explore yourself in an architectural manner and also lets you to be your true self."

Nunthida Owatranporn

the 11th Class, an architectural designer at an architectural firm in Singapore.

Can you describe your program and SoA+D in 3 words?

"Experiences. Experiments. Extraordinary"

What is your recommendation for new students who want to come to study here?

"If you desire to study something with different points of view, and to acquire knowledge from some experts in their field, this school can give you everything that you want; however, you need to have an effort in studying and practicing. Learning in Architecture Program (or other programs in SoA+D) is not hard, but many people give up on their first year or second year because of some misunderstanding towards some subjects. Therefore, try to do your best and you will achieve your goal in this career in the future."



Nunthida



Nonotello
ARCHITECTURE AND INTERIOR DESIGN

Please visit our **web site** & **Facebook Page**
www.monotello.co.th / www.facebook.com/monotello

Tel : (66)026428225 Fax : (66)026428229 E-mail : office@monotello.co.th

Our Program

SoA+D was established in 1994 to be the first architecture school in Thailand that provided a complete program of architecture study in English. It currently offers four international programs in the undergraduate level (Bachelor) – Architecture, Interior Architecture, Industrial Design and Communication Design. SoA+D also offers international graduate programs (Master) in Design and Planning.

Our Approach

At SoA+D, we believe that successful design education does not only aim to produce competent and skillful designers but those who have an awareness of social cultural and environmental responsibility. With this determination, our school places strong emphasis on project-based learning and experimentation grounded on relevant questions and debates in Thailand as well as the international arena.

Architecture

The position of Architecture program’s (B. ARCH) is placed on the very thin edge between the experimental on one side and the practical on the other. Our students are always asked to embrace to the real conditions of working while being encouraged to challenge those conditions. As an architect, one must contribute to the improvement of social and environmental conditions. These determinations are reflected in the different dimensions in our program, ranging from the structure of design studios, individual courses, studio projects, recruitment of faculty and extra-curriculum activities, such as international workshops and study trips.

Our “Vertical studio” for the 4th year students offers a unique learning experience in our program where young and promising Thai architects are invited to join our team and share their skills with our students. Research based and experimentation grounded on contextual relevance are at the heart of our studio projects.

Internships abroad with architecture firms are also available for qualified students to broaden student’s perspective and to gain experience with international architectural practice.

Interior Architecture

Our Interior Architecture program (B. ARCH) provides a strong understanding of the overall architecture context of building environment combined with intensive investigations in the decorative arts often associated with interior design courses. Students in our program work with interior structure and surface, coordinating all of the elements that make up an interior space – from walls and windows to color, lighting, furnishings, and textures.

Our curriculum is strongly design-oriented. Design studio courses are at the core of the curriculum and augmented by courses in theory, technology and practice. Specialized interior design coursework, workshops, fieldtrips, internship programs as well as academic exchange programs are regularly available for students to enrich the whole learning experience.

Industrial Design

Our design approach is unique among other Industrial Design programs in Thailand. The core design pedagogy of this 4-year program (BFA) is based on cooperative work with hands-on experience concerning user orientation and human-centered design. Since teamworking and multidisciplinary practice are very crucial for the design profession particularly for industrial designer, our studios offer opportunities for students to collaborate with experts from different professions.

Project based learning through our Research and Design Center (REDEK) helps students to realize the practicality of ID profession in multi-dimensions both working process and contribution to society, student’s perspective and to gain experience with international architectural practice.

Communication Design

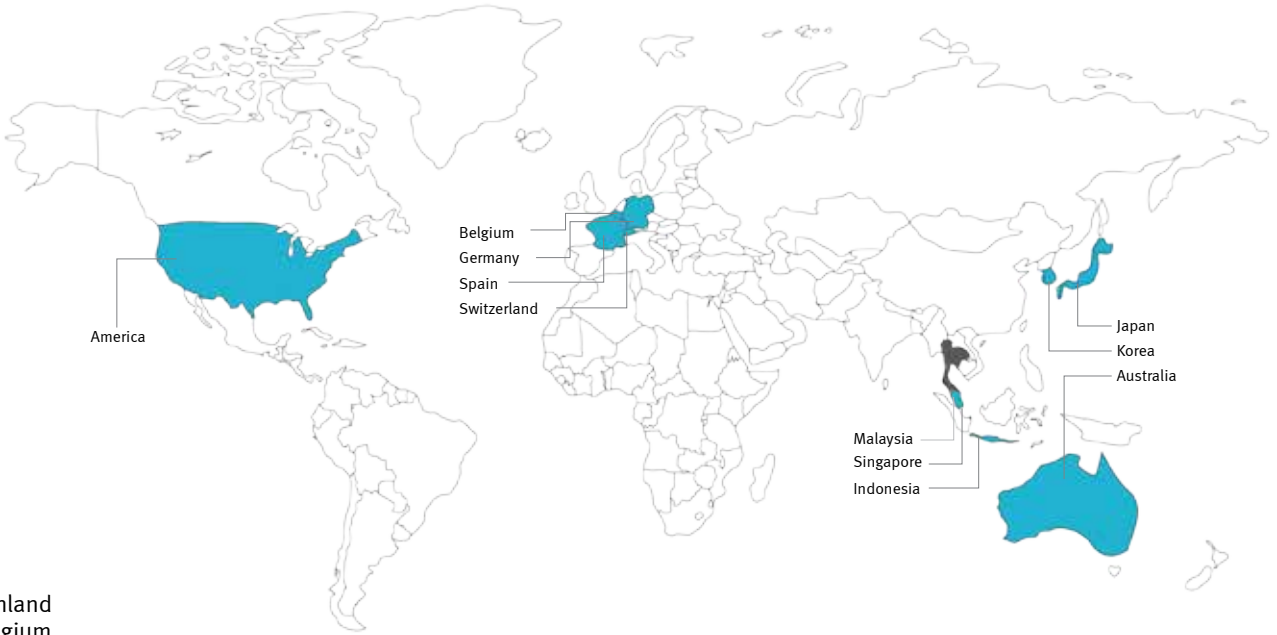
Believing that design education must focus on some deeper and enduring principles that transcend technology, our Communication Design program (BFA) aims to foster creative problem solving and visual thinking, while emphasizing a process that is informed by research of both needs and contexts. We see design as a way to impart general knowledge of the world. Through design, students are exposed to issues at large as other subjects are brought into play: for example, psychology, semiotics and communication theory.

The program’s multi-cultural team results in a diversity of ideas and teaching styles, as well as the opportunity for students to have a great sense of the world outside Thailand through the team’s long term interaction with faculty.

Master Degree

The Graduate Program of Design and Planning (International Master Program) is developed by a multidisciplinary team of young academics in conjunction with foreign experts and accomplished external advisors. The program is designed to meet prospective demands on professionals who are well versed in innovative research and design, and pioneering planning techniques and methodologies. It helps professionals to develop these skills through a dynamic and innovative learning environment revolving around human values, knowledge synergy and partnerships. Advanced Knowledge, specialist techniques and recent technologies are provided in seven fields of study:

International Network



- University of Bremen, Germany
- Iceland Academy of the Arts
- Osaka University, Japan
- University of Arts and Design Helsinki, Finland
- St. Lucas Department of Architecture, Belgium





■ **City Campus (Sathorn Road)**

■ **KMUTT Main Campus (Bangmod, Pracha-Uthid Road)**

■ **Bang Khun Thian Campus**

Contact

School of Architecture and Design
King Mongkut's University of Technology Thonburi

Address : 49 Soi Thian Thale 25,
Bang Khun Thian - Chai Thale Road,
Tha Kham, Ban Khun Thian, Bangkok
10150, Thailand

Phone : +66(0) 2470-7887-8

Fax : +66(0) 2452-3792

E-mail : arc.off@kmutt.ac.th

Facebook : Search for "SoA+D School of Architecture and Design"

Twitter : twitter.com/soadkmutt



King Mongkut's
University of
Technology
Thonburi



School of Architecture and Design

