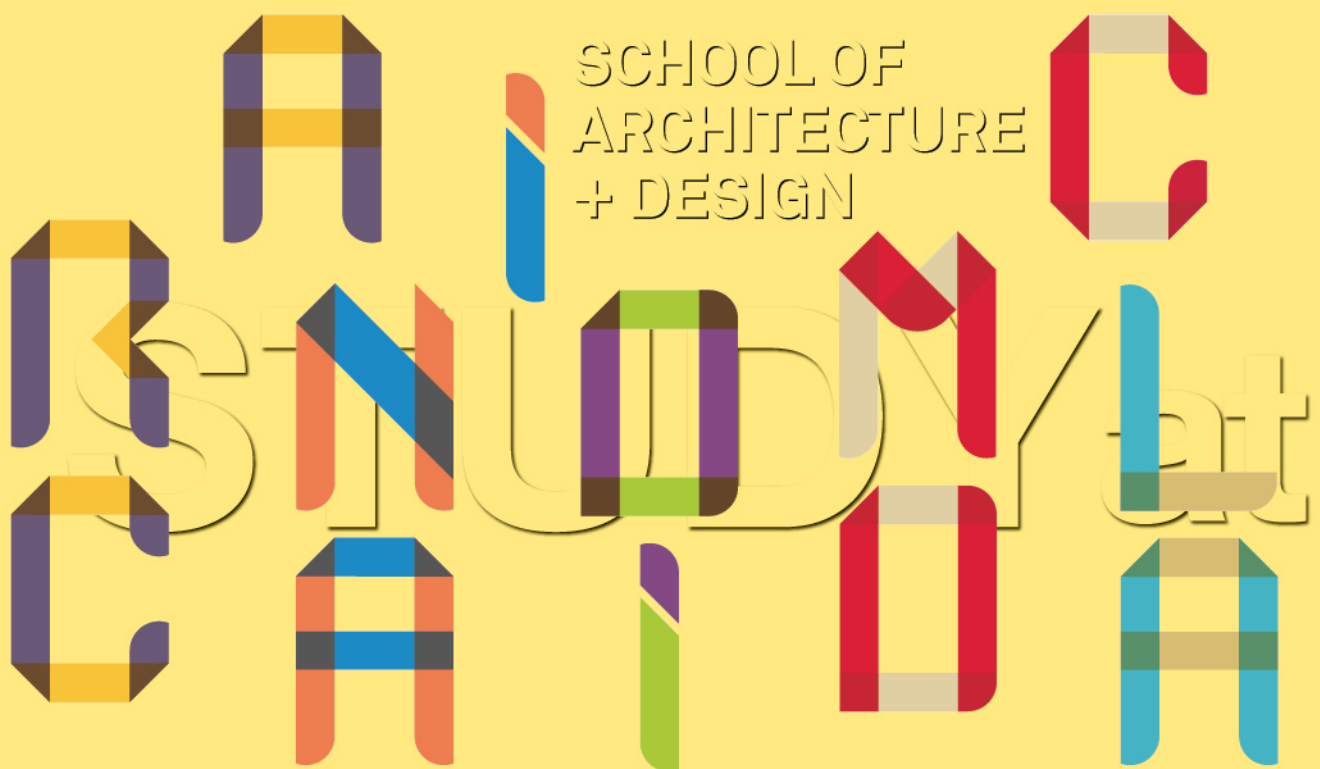


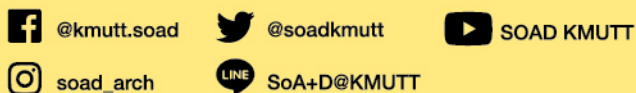


SoA+D



School of Architecture and Design
King Mongkut's University of Technology Thonburi
49 Soi Thian Thale 25, Bang Khun Thian – Chai Thale Road, Tha Kham
Bang Khun Thian, Bangkok 10150

<http://soad.kmutt.ac.th>
Phone: + 66 (0) 2470 7887 - 8
Fax: + 66 (0) 2452-3792
Email: soadadmission@mail.kmutt.ac.th

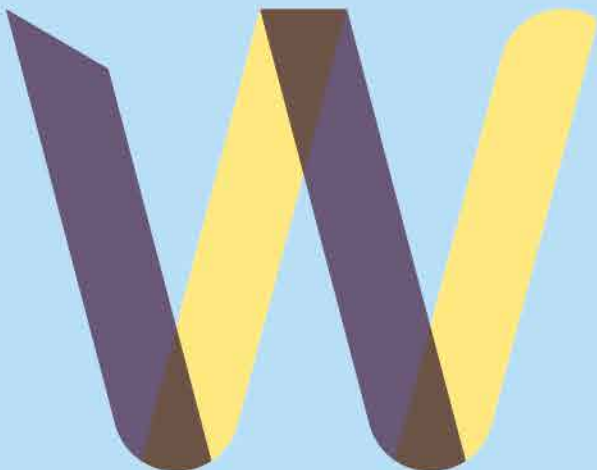


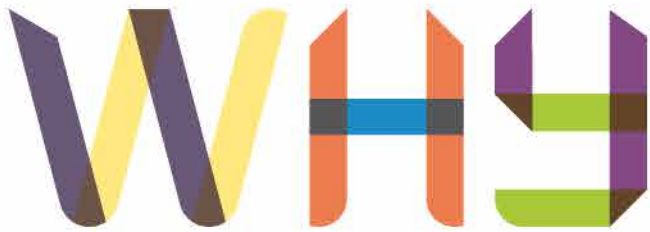


Why Study in Bangkok, Thailand?

Thailand, recognized as 'Land of Smiles', is considered as a natural hub for Southeast Asian region and continues to take hold of such connectivity and "Gateway for Economic ASEAN Community". Since Thailand is significantly located in the region, the mobility from neighboring AEC countries such as Myanmar, Laos, Cambodia, Vietnam, etc. makes adventures never-ending, easy and affordable. Thailand being culturally rich offers a collection of abundant eco-systems and cuisines mixing sour, spicy, sweet, and salty tastes.

Thailand is also hugely committed to tourism industry brought about by continuous advancement in terms of technology and infrastructure to provide greater convenience for Thai and non-Thai nationals. Hence, Thailand is the perfect destination to begin education which prepares you for promising and challenging career opportunities extending from restaurant industry, web design industry, real estate industry to technology and mobile industries. Business investments flock in Thailand - young, diverse and economical country.





Study in Bangkok



Known for its tropical beaches, magnificent royal palaces, ancient ruins and ornamental temples, Thailand has honed its capital city, Bangkok (The City of Angels) into a finest pivot for most of the commercial and economical activities. Located on the western bank of the Chao Phraya River, Bangkok is one of the largest outdoor markets. It is one of the most dynamic and exciting cities in Southeast Asia - very famous and valued by visitors for its adaptability and numerous points of interests.

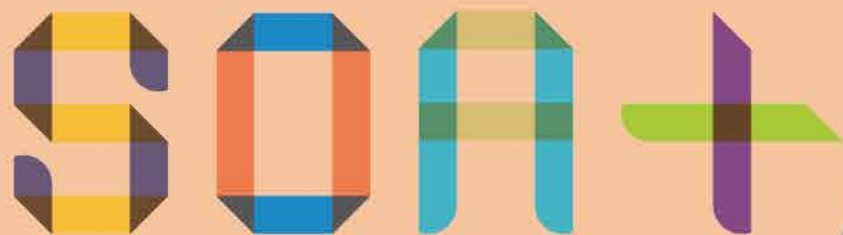
Bangkok is a melting pot of cultural diverse delicacies, eclectic fashion, dynamic life styles, and interesting attractions, and visual delights. Precisely, Bangkok being the world's number one tourist destination Bangkok is now the most visited city in the world.





Why study at SoA+D?

SoA+D as an international design school has a unique, dynamic and integrative approach in education. It unfolds student's design and soft skills which are essential to the demands of our changing society. Teaching and learning activities are student-centered in such a way that the students are encouraged to know themselves and learn ideas through exploration and research of their surroundings in real context. In addition, co-curricular and extra-curricular activities are provided to the students in order to enrich their studio and lab projects.



“ ADVANCED
DEGREE
ADVANCES
YOUR CAREER ”

Student Life

SoA+D has its own independent building set within the 80-acre natural campus in Bang Khun Thian. Workspace areas are provided with a special library, computer lab and workshops equipped with the latest technology such as 3D fabrication, laser cutters and CNC machines, along with a spacious gallery, orange space, studios, stationery shop, printing station and café.

On-site accommodation is also available, and easily accessible from Bangkok with a regular shuttle bus from the city campus, KMUTT Knowledge Exchange for Innovation Center (KX). Other facilities include a basketball court, canteen, gym, ponds and cycling track at our dedicated location away from the city that provides a lively mixed learning environment.





SCHOOL OF ARCHITECTURE + DESIGN

School of Architecture and Design

The School of Architecture and Design was established in 1994 to provide a complete program of architecture and design studies in English. Our five bachelor degree programs (international programs) are currently available: Architecture, Interior Architecture, Landscape Architecture, Design Innovation, and Communication Design; and seven fields of study in Graduate Program in Design and Planning (international programs).

Our Vision

Global Innovation Leader. Global Aspiration, Local Inspiration.

Our Objectives

To educate and train both undergraduates and graduates in architecture and design

To promote the research and development of applied technologies in the various art and design principles

To render technical services in design, consultation, advisory management, and training to serve government, industry and private sectors



Our Approach

Our school strongly emphasizes the project-based learning and experimentation grounded in relevant issues and current debates both in Thailand and in the international arena. We believe that successful design education should aim to produce not only competent and skillful designers, but also creative practitioners who have socio-cultural awareness and environmental responsibilities.

OUR INTERNATIONAL PROGRAMS



Architecture (5 years)

The Architecture Program provides a complete training for students to embrace the real working conditions. As architects, they must contribute to the improvement of their society and environment. These are reflected in the different dimensions of our program ranging from the structure of design studios, individual courses, studio projects, extra-curricular activities to the recruitment of faculty.

Interior Architecture (5 years)

The Interior Architecture Program provides our students a strong understanding of the overall architectural context of building environment combined with intensive investigations in the decorative arts associated with interior design courses. As interior architecture students, they work with interior structure and surface, coordinating all elements that make up an interior space - from walls and windows to color, lighting, furnishings and textures.



Landscape Architecture (5 years)

The Landscape Architecture Program provides a multi-disciplinary curriculum to cultivate landscape architect who has an extensive and holistic view of the world and changes in the world's contexts. We train our students to be a thinker and practitioner who can apply knowledge and skills in landscape design and related fields with responsibilities to humanity and society, and awareness on environment conservation including the diversity of social and cultural contexts.





Design Innovation (4 years)

The Design Innovation Program provides our students a human-centered design approach. The core pedagogy is based on cooperative work allowing hands-on experience in user research and orientation. We train our students to be a competent professional designer who can work creatively in design/manufacturing-oriented business practices, in both local and global environments. Our human-centered design curriculum caters students with sensitivity to social changes and ever-changing future needs, as the key to innovative design solutions.



Communication Design (4 years)

The Communication Design Program aims to foster creative problem solving and visual thinking and emphasizes a process based on research of needs and contexts. Through design education which focuses on deeper and enduring principles that transcend technology, the students are exposed to issues at large integrated into their subjects such as psychology, semiotics, and communication theories. The program's multi-cultural team results into diversified ideas and teaching styles as well as an opportunity for students to have a great sense and understanding of the world outside Thailand.

Design Preparation Course

Design Preparation Course is a course primarily geared towards providing incoming freshmen students of the School of Architecture and Design an opportunity to experience a smooth transition to design studies. It is carefully designed to develop crucial transferable skills and to cultivate favorable attitudes that support students in their study at SoA+D.



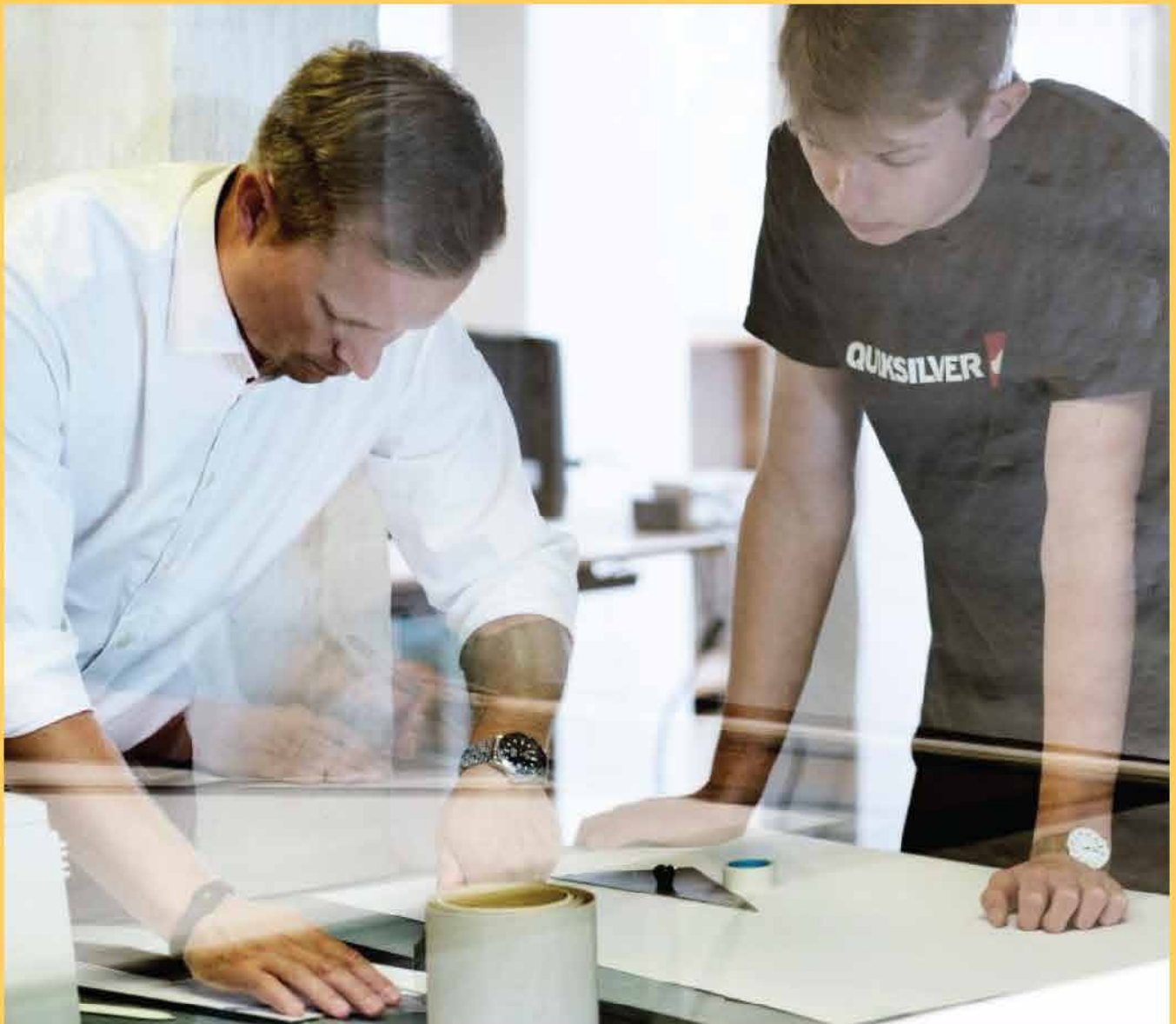


Cooperative Education Program

Cooperative Education Program provides students an opportunity for actual professional practice as a temporary employee at the workplace. Students will gain first-hand experiences from real work performance, actual clients and working environment.

Internship Program

Our school requires students to undergo an internship, “on-the-job training” for the duration of 2 months or 4 months, depending on the chosen program, in Thailand and abroad. This is an opportunity for the students to gain professional experience before graduation. By working with real professionals, the students gain knowledge on how to work professionally in a firm as a preparation for their future career.





REDEK (Research and Design Service Center, KMUTT)

REDEK, SoA+D's collaborative laboratory, provides instructors and students a platform to collaborate on various types of speculative proposals and real projects. This center allows learning to extend beyond classrooms into the society and the world. It is composed of multi-disciplinary team specializing in design thinking and human centered design approach to variety of design problems such as new product development, user experience, product - service to architectural design, etc.

Jacob Jensen Design-KMUTT Bangkok

In partnership with King Mongkut's University of Technology Thonburi, Jacob Jensen Design studio offers accredited academic programmes. An apprenticeship at Jacob Jensen Design is a unique opportunity for students to experience a Danish design philosophy. Students in this studio do not only acquire design skills but they also gain the ability and confidence to create products that inspire the world.





COLLABORATIVE LEARNING

Our SoA+D design laboratories are established to be a platform where young students can work closely with their professors in real world setting. Students who participate in Lab Internship Program will engage in a series of research to identify problems and opportunities, envision a variety of possibilities, and implement constructive and creative solutions.

ABLE Lab

ABLE lab gathers team members from various disciplines to produce products and services that enhance the living of the elderly group. The lab's researches focus on product/service design, education, and interior/exterior design that are considerate to the needs of the ageing society. The lab also promotes this awareness among the business sectors through collaborative studios where real products and life situations are negotiated to produce the best outcomes that would benefit the target group.

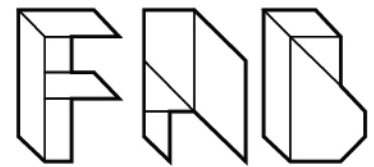
Social and Cultural Innovation (S/C/I) Lab

S / C / lab is led by a multi-disciplinary team of researchers and design practitioners who work on social and cultural challenges in communities. It aims to transform community for sustainable livelihood and to empower underprivileged and marginalized groups. The issues for study range from art and crafts wisdom to education and social well-being.



Fabrication Lab

With a focus on computation and production in architecture and design, Fab Lab undertakes research onto the use of computation and materiality as a way to bridge the gap between digital and analogue production through the digital fabrication processes to enable advanced design capabilities. The lab is consistently expanding and equipped with high quality machines which can provide affordable digital fabrication services and software training to students, staff and public.



www.soadfab.com

Urban Sense Lab

The Urban Sense Lab aims to examine and deliver urban experiences, through the essential understanding of how people interact with the city and create experience with all the senses using a range of visual, sonic, olfactory, gustatory and tactile modes suited to the development of the local culture along with the wider global context.



Future Living Lab

By specializing in research and design into new forms of architecture, building systems and building envelopes, Future Living Lab focuses on seismic and natural disaster resistant architecture, prefabricated buildings, component design and digital fabrication design.



Lighting Research & Innovation Center (LRIC) Lab

LRIC has a multi-disciplinary team of lighting researchers, industrial design experts, and engineers, specialized on daylighting and energy-efficiency in buildings. We collaborate on a number of projects with the California Lighting Technology Center at UC Davis and other leading universities in the Asia-Pacific region. Our research addresses the significance of energy efficiency and lighting quality as well as human factors. We aim to bridge the gap between lighting technologies and design applications in architecture and urban settings. While we strive for research excellence, we also maintain our close links to the design community as well as the lighting industry.



Humanitarian Design Lab (HDL)

HDL is considered as a research laboratory engaged in architectural design projects that address unique, socially oriented problems in humanitarian needs. In common commercially driven projects, these humanitarian issues are often neglected due to lack of generating financial benefits, probable shortage in producing wide acceptance, or general disregard by the public. They are, however, very important as they shape and define the society as a whole.



HUMANITARIAN
DESIGN
LAB

Spatial Environment and Experimental Design (SEED) Lab

SEED is one of the research units operated by the Department of Interior Architecture Program under the School of Architecture and Design (SoA +D), KMUTT. SEED focuses on producing research studies and experimental designs in relation to interior and exterior spaces. Derived from the concrete research study process, the results are subject to be applied as design guidelines or developed further for spatial environments-interior and architecture in particular.



Spatial Environment and
Experimental Design Lab

Human-Centered Design (HCD) Lab

HCD Lab is a laboratory for studying human behavior. It produces research from the faculty, concerning behavioral studies for teaching and learning assisted by modern equipment and software for undergraduate and Master's degree programs. There are devices and tools such as an 'eye-tracking' device to track the user's eyes, seat pressure sensor gauge to measure the pressure applied by the user on various surfaces, devices for connecting electronic circuit boards and making product prototypes including the installation of surveillance cameras to record human behavior while operating various products.



Human-Centered Design
LAB
Empathize users we design for.



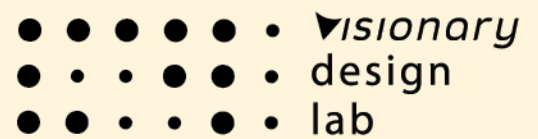
Media Lab

Media Lab is established to serve the academic service in communication design area. The Media Lab deals with various media which the Communication Design program has provided to our students. We aim to work in collaboration with instructors and students together with real clients. We believe that the students need new ideas and new challenges; thus, by letting them see the world earlier, they will become better. We strive to discover new ideas, media and project that the students and the clients will create together.



Visionary Design Lab

The Visionary Design Lab collaborates with public and private enterprises to design and implement visionary design solutions and strategies to solve their short-term problems, accelerate transformational leadership, and achieve sustainable growth in the uncertain, continuous-changing, complex world.



Interculture Lab

The Interculture Lab serves as a bridge for local and international students to connect, collaborate, and establish meaningful connections with each other at KMUTT. We provide a friendly and safe space for local and international students to collaborate and bond. The lab aims to help international students find work opportunities and merge into the Thai setting, which in turn also opens up opportunities for Thai students to gain international peers without having to go abroad.



INTERCULTURE LAB

Sparking Unit Lab

Sparking Unit Lab facilitates igniting creativity through multidisciplinary Finding - Sharing - Exploring as tools and testing playgrounds. The Sparking Unit Lab looks at innovation, sustainability, safe spaces, and public contribution. We investigate, develop, and establish bodies of knowledge that aim to help form newer and better solutions in the fields of architecture, product design, as well as other design-related subjects. Our belief in sustainability is embedded within the entire design process, from research to solution design. To make sure that our collaborators, professionals and students alike will be able to thrive in the program, we work hard to make sure that our unit becomes a safe space for exploring, trying things, and testing ideas without fear. In addition to this, we find it important to share our learnings about design back to the public in a way that is casual, accessible, and beneficial for everyone.



Material Innovation and Sustainability (MIS) Lab

MIS Lab Investigates the possibilities of design materials as an approach towards more sustainable design practices. The Material Innovation and Sustainability Lab is dedicated to the study and development of materials for design with strong awareness in sustainability. We improve upon existing materials, and sometimes design new materials to match design and product's requirements. The lab also studies other design-related applications that may require new and innovative use of materials. Our use of materials, as well as our design processes, is driven by our belief in sustainability concepts.



Material Innovation and Sustainability Lab

DES Lab

The Design for Environmental and Sustainable Development Lab (DES Lab) is an interdisciplinary group with architecture, landscape architecture, built environment and master planning work which addresses sustainable development. We believe in creating the design that keeps a balance between man and the environment. We practice through work integrated learning model with the outcomes from the processes that focus on creating innovative / digitalization tools, network and body of knowledge to support education and communities towards development regarding the long range future of sustainable society.



CoSI: Center of Service Innovation

The Center of Service Innovation (CoSI) is a space for interdisciplinary research and innovation. Our approach to human-centered innovation is enhanced by the tools and methods of design, technology, and data. Design thinking and service design help us examine human behavior and conceptualize user experiences, while collaborations with technologists help us uncover feasibilities and actualize our ideas. A third layer of quantitative behavioral data is supplemented by our use of data analytics. Our interdisciplinary methods continue to help us as we look forward and strategize the possibilities of future service innovations.





HOTPOT!: Social Practice & Creative Action Lab

KMUTT's HOTPOT! LAB brings together designers, artists, scholars, and communities through regional and international art and design projects, public interventions, and exchanges. HOTPOT! creates opportunities for art and design project building in real social contexts with a vision toward collaboration. We aim to support creative actions and interventions that build and sustain critical dialogue and action within communities through socially inclusive practices and arts projects. Focusing on projects with local and international impact and support, HOTPOT! will respond with creative actions, meaningful research and relationship building in the public sphere.

BioWellness Design and Innovation Lab (Bwell)

BioWellness Design and Innovation Lab (Bwell) is an interdisciplinary/multidisciplinary research and design platform crossing between science and design (Biochemistry and Industrial Design). The lab aims to pursue, either conceptually or commercially, the research and development through health, wellbeing, and medical industry both within academic sector and industry sector alike in order to create added value to the own brand manufacturers which will fit the users' needs, domestically or internationally.



LAB BASED LEARNING

School of Architecture
and Design (SoA+D)



Academic Exchange Network

The Student Exchange Program is designed to enhance the personal and academic experiences of students who come to study at the School of Architecture and Design as well as those who are going to study at other universities. Partnerships between SoA+D and other universities in various countries have been established by creating a network of diverse ideas and cultures. SoA+D has an active international collaboration with universities in Asia, Europe and USA.



Neighbor Program

Neighbor Program (NP) aims to reconnect art and design institutions in the Southeast Asian region. NP has already conducted successful international workshops hosted by participating design schools in Malaysia, Indonesia, Laos, Singapore and Thailand and it offered a venue for knowledge sharing among the participants.



International Workshops

Each year SoA+D hosts several international workshops in collaboration with partner universities in Taiwan, Korea, Japan, Singapore, Philippines, etc. Students and instructors from various partner universities convene to share knowledge and expertise in architecture, design, innovation and research involving numerous topics and projects.

Inbound and Outbound Study Trips

There are also regular inbound and outbound study trips that provide students the opportunities to encounter and explore novel things in an authentic setting, experience cultures, respect differences, develop new friendship with others and thus broaden their horizons and knowledge.

EXTRA-CURRICULAR ACTIVITIES



Social Volunteer Camp Program

SoA+D Social Volunteer Program is a platform for young volunteers who work with partner communities in Bangkok and Thailand's upcountry areas - Ratchaburi, Nan, Sakon Nakhon, Buriram, and Chiang Mai. Students have opportunities to voluntarily help in empowering these local village communities in diverse fields - from education to architecture and health-wellbeing, and from food and agriculture engineering to energy and environmental sustainability.





Exhibitions and Degree Shows

Our students' projects are exhibited for public viewing. Exhibitions and degree shows are conducted every academic year as a culmination of four or five years of hard work and academic studies. These are students' opportunities to showcase their creative talent to the public.



Creative Camp

Creative Camp is a yearly project of students to establish a good image of SoA+D as a design school and to guide and motivate high school students who have a passion in art and design. Also, the camp aims to introduce to the participants some insights about design thinking process and creation of actual piece of work or installation.



Public Lectures

Public lectures provide a valuable opportunity for students to gain knowledge from experts, designers and architects representing various local and international sectors and industries.

GRADUATE PROGRAM

Master of Architecture Program in Design and Planning (International Program)

- Master of Architecture (Design and Planning)

Master of Science and Master of Fine Arts Program in Design and Planning (International Program)

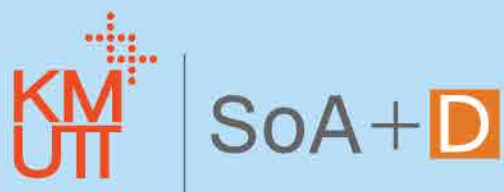
- Master of Science (Design and Planning)
- Master of Fine Arts (Design and Planning)

The program is designed to meet prospective demands on professionals who are well-versed in innovative research and design, and pioneering planning techniques and methodologies. Advanced knowledge, specialist techniques and recent technologies are provided in seven fields of study:

- Architecture Plus
- Design Management
- Interaction Design
- Building Technology and Innovation
- Lighting Design
- Urban Management
- Visual Communication

Ph. D. in Design and Planning





School of Architecture and Design
King Mongkut's University of Technology Thonburi
49 Soi Thian Thale 25, Bang Khun Thian – Chai Thale Road,
Tha Kham, Bang Khun Thian, Bangkok 10150

<http://soad.kmutt.ac.th>
Phone: + 66 (0) 2470 7887 - 8
Fax: + 66 (0) 2452-3792
Email: soadadmission@mail.kmutt.ac.th



@kmutt.soad



@soadkmutt



SOAD KMUTT



soad_arch



SoA+D@KMUTT



SoA+D

คณะสถาปัตยกรรมศาสตร์และการออกแบบ
School of Architecture and Design




Architecture
International Program



Interior Architecture
International Program



Design Innovation
International Program



Communication Design
International Program



Landscape Architecture
International Program

Be a part of SoA+D, KMUTT

“Glocal Innovation Leader. Global Aspiration, Local Inspiration.”